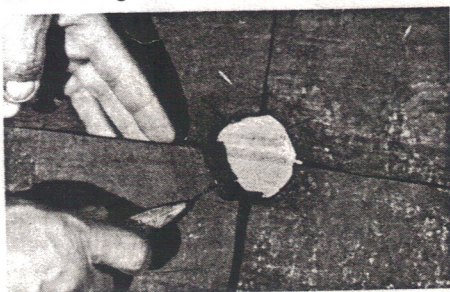


Installation Instructions

Step 1

Cut existing modified membrane (See A) and place the Modivent underneath the vapor barrier. (See B)

**A****B**

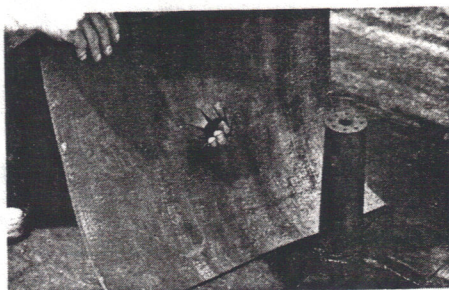
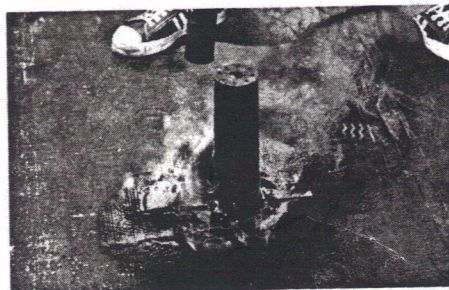
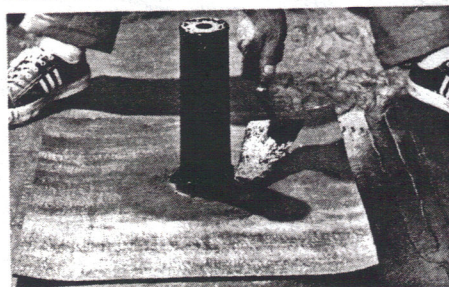
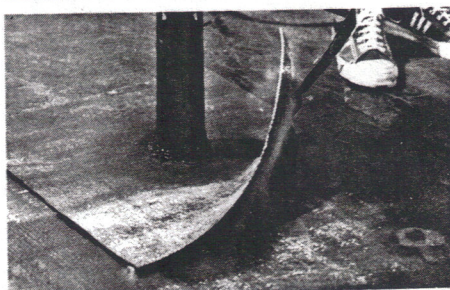
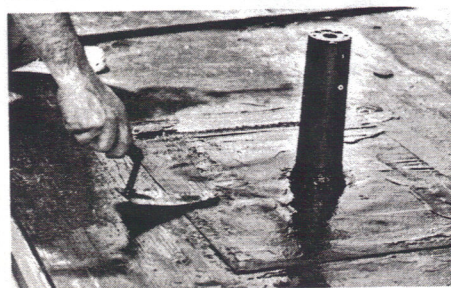
Step 2

Torch and trowel the modified membrane to the modivent. (See C & D)

**C****D**

Step 3

Cut a piece of modified membrane large enough so that there is a 6" overlap back on the existing membrane. Don't forget to cut a hole in the middle of this piece so that it can be slipped over the modivent pipe. (See E) After having heated existing membrane (See F) and cut piece (See G), torch and trowel this piece in place. (See H, I & J) These steps are done to repair the original cut made in the existing membrane.

**E****F****G****H****I****J**

Step 4

Cut a 3" wide strip of modified membrane and cut notches along the entire length of the strip. Make sure this piece of membrane is long enough to wrap around the modivent. (See K)



Step 5

To finish the job, torch and trowel the 3" wide strip of membrane around the vent pipe and trowel in (See L, M & N)

