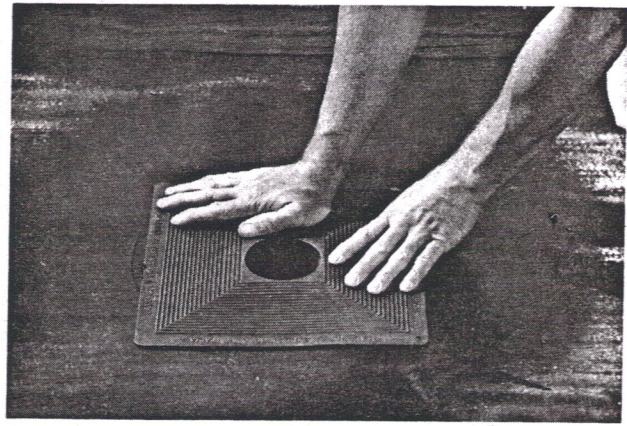
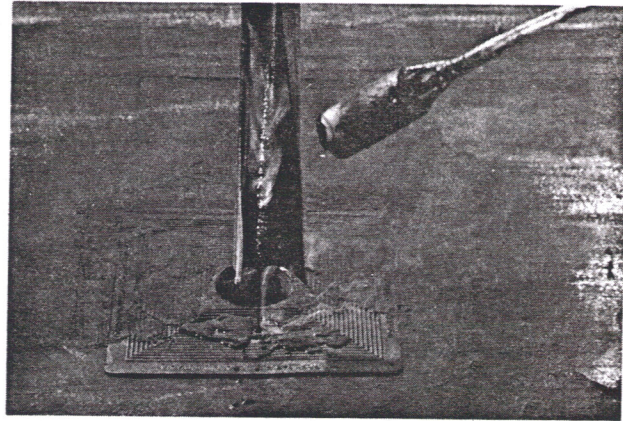


**Step 1**

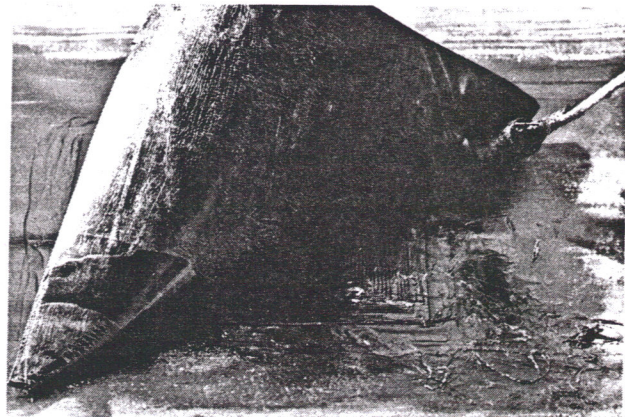
*Heat modified membrane lightly around drain hole; then press modidrain in place.*

**Step 2**

*Take a scrap piece of modified membrane, heat and get the asphalt spread over entire modidrain.*

**Step 3**

*Cut a piece of modified membrane large enough so that there is a 6" overlap on to the existing membrane and torch in place, heating both the existing membrane and the piece cut to cover the drain.*

**Step 4**

*The last step to installing the modidrain is to place the drain guard in position.*

